



We invented the popcorn machine
THEN JUST KEPT GOING!

176 MITTEL DRIVE, WOOD DALE, IL 60191

**COATER / MIXER
MODEL CMTRA/CMTRE (14045)**

**120 Volt,
Single Phase, 60 Hz**

**230 Volt,
Single Phase, 50 Hz**



READ and UNDERSTAND these operating and safety instructions before operating this popcorn machine

SAFETY FIRST

The information in this manual is essential for the safe installation and of your Cretors popcorn machine. The manual must be read and understood before installing, and operating this equipment, or equivalent training must be provided.



"The employer shall instruct each employee in the recognition and avoidance of unsafe conditions and the regulations applicable to his work environment to control or eliminate any hazards or other exposure to illness or injury".
Ref.: 29 CFR 1926.20 (b)(4)(a)(2)



It is understood that safety rules within individual companies vary. If a conflict exists between the safety procedures contained in this manual and the rules of a using company, the more stringent rule should take precedence.

I INTRODUCTION

This manual is filled with timesaving and money-saving information regarding your Cretors popcorn machine. There is nothing, however, more important than the safety aids and warnings that is found throughout this document. The Safety Alert Symbol is used to identify topics of primary safety concern wherever they appear. Furthermore, a separate section has been included which deals exclusively with operation and accident prevention.

If, after reviewing this manual, anything is unclear or technical problems are encountered, contact the dealer from whom you purchased your machine for assistance and if there are any additional questions, feel free to contact our Customer Service Department at the address and/ or phone number listed on the front and back covers of this manual. Always have the model and serial number of your machine available to assist in obtaining the correct information.

II SAFETY ALERT SYMBOL

The symbol shown below is used to call your attention to instructions concerning your personal safety and the safety of others. Watch this symbol. It points out important safety precautions. It means "ATTENTION! Become Alert! Your personal safety is involved!" Read the message that follows and be alert to the risk of personal injury or death.



III PURPOSE OF MANUAL


This instruction manual is intended to familiarize owners with the operation and safety procedures associated with your Cretors popcorn machine.



This manual should be kept available to operating personnel.



A person who has not read and understood all operating and safety instructions is not qualified to operate the machine.

IV PRODUCT IDENTIFICATION

CRETORS COATER - MIXER – CMTRA-X; CMTRE-X (14045)

ELECTRICAL SPECIFICATIONS: Coater/ Mixers are available in any of the following Electrical configurations:
 120Volt, Single Phase, 60 Hz
 230Volt, Single Phase, 50 Hz.

MODEL CMTRA-X COATER/ MIXER

Capacity: 5 Gallon Bucket of Popped Corn, approx. 2lbs
 Electrical: 120V, 60Hz, 200 watts
 Dimensions: 25”L x 26”W x 30”H
 Net Weight: 40 lbs. (18 kg)

MODEL CMTRE-X COATER/ MIXER

Capacity: 5 Gallon Bucket of Popped Corn, approx. 2lbs
 Electrical: 230V, 50Hz, 200 watts
 Dimensions: 25”L x 26”W x 30”H
 Net Weight: 40 lbs. (18 kg)

V INSTALLATION

This machine should be placed in a prominent location and set reasonably level.



Do not connect to a higher voltage or different type current than indicated above or damage will result for which we cannot assume responsibility.



Do not remove feet or block spacing under base so that unit can not pull air onto the motor or the unit will over heat and shut down until it cools.

VI OPERATION
To make a batch of cheese or flavored corn, proceed as follows:

1. Place two pounds of popcorn or one five-gallon bucket of popcorn into mixer bowl.
2. Turn on mixer switch. (if supplied with optional timer, turn timer clockwise to desired time.)
3. Pour liquid cheese, powder cheese, or flavor mix over popcorn.
 - i. (Recommend two cups of liquid cheese melted with one cup of popping oil mixed together or approximately one cup of dry cheese mix. A small amount of oil can be sprayed on the corn if there is difficulty with the cheese sticking to the corn.)
4. Wait until popcorn is coated evenly then shut off mixer switch.

To make coated nuts or any food product that may require flavor coating:

1. Place mixing blades over mixing shafts and install retaining clips.
2. Place nuts or products into mixing bowl.
3. Turn on mixer switch.
4. Pour mix over product.
5. Wait until product is coated evenly then shut off mixer switch.

VII TROUBLE SHOOTING
1. If bowl will not turn

- (A) Is machine plugged in?
If Yes
- (B) Is lighted switch "On"?
If Yes
- (C) Make sure Bowl is properly placed on rollers.
- (D) Check output of switch. There should be 120V. for domestic machines and 230V. for export.
Voltage (No) Replace switch
Voltage (Yes) Check voltage at motor
If yes, replace motor
- (E) Make sure cooling fan is operating. Agitating motor may shut down and restart if overheats. If fan is not operating:
- (F) Voltage at fan (No) check wiring.
- (G) Voltage at fan (Yes) Replace fan.

VIII CLEANING & SANITATION

Be certain the machine is turned 'OFF' and power is unplugged before sanitizing this machine. Failure to do so could result in injury.

Clean unit every day. Perform the following:

- Turn switch 'OFF' and remove electrical cord from wall supply.
- Remove coating drum from machine. Also remove mixing blades and clips (if used). Wash in hot soapy water, rinse, and dry.
- Wipe all external surfaces with proprietary stainless steel cleaner or warm damp cloth and dry thoroughly.
- With drum removed, weekly turn the base over and assure the fan and fan grill (wire cover) are clean and that fan is turning freely.
- Replace drum.
- Inspect wheels for wear and replace as required.



CAUTION: This appliance shall not be cleaned with a water jet.

This manual is filled with timesaving and money-saving information regarding your Cretors popcorn popper. There is nothing, however, more important than the safety aids and warnings found throughout this document.

If you have any questions, contact your local dealer and if there are any additional questions, feel free to contact the Customer Service Department at C. Cretors and Company.

Additional copies of this manual can be obtained from C. Cretors and Company at the address listed below. Please provide model and serial number when requesting additional copies of this manual. There will be a nominal charge for additional copies.

Cretors guarantees this machine to be free of defects in parts, materials and workmanship for two year. Please take this time to fill out the factory registration card and return it to the factory to activate your warranty. If you have any questions concerning the Cretors' warranty, please contact your local dealer or the Customer Service department at C. Cretors and Company.



We invented the popcorn machine
THEN JUST KEPT GOING!

C. CRETORS AND COMPANY

176 MITTEL DRIVE

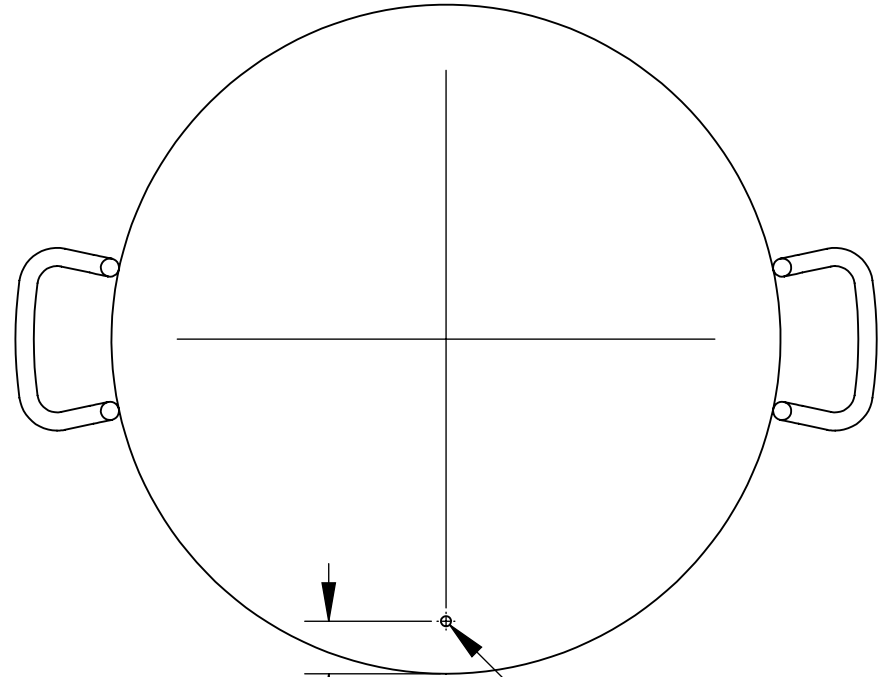
WOOD DALE, IL 60191

PHONE (773) 588-1690, (800) 228-1885, FAX (847) 616-6970

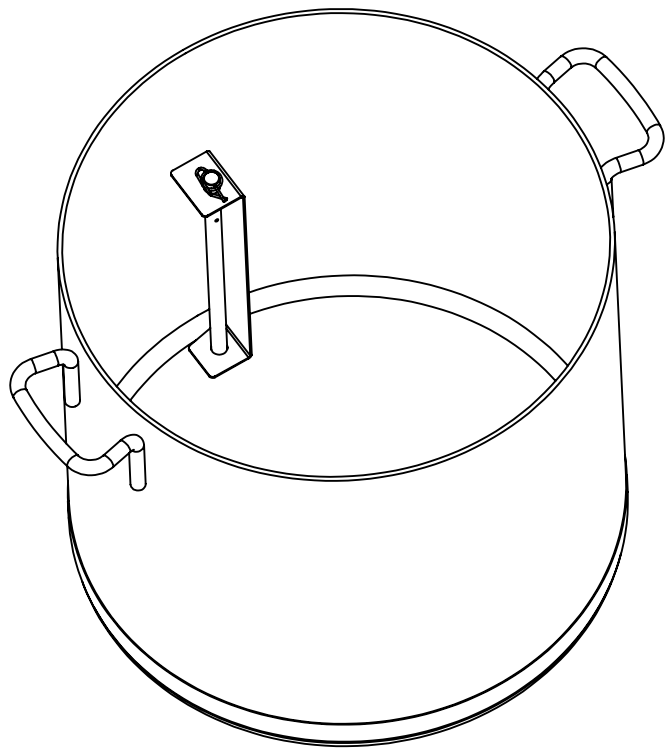
WEB SITE: <http://www.cretors.com> Email: postmaster@cretors.com

BILL OF MATERIALS			
ITEM #	QTY.	P/N	DESCRIPTION
1	1	16811-1	BOWL, 60 QUARTS, PURCHASED
2	1	12816	REAR WHEEL SUPPORT / MIXER SHAFT
3	1	5743	1/4", MEDIUM SPLIT LOCKWASHER, 18-8 S.S.
4	1	12628	1/4-20 X 5/8" LG FULLY THD, HEX HEAD CAP SCREW, 18-8 S.S.
5	1	12835	MIXING BLADE, MIXER/COATER
6	1	12818	CLIP, RETAINING, RUE-24
7	1	21610	TAPE, ANTI-SLIP, 60 QUART BOWL

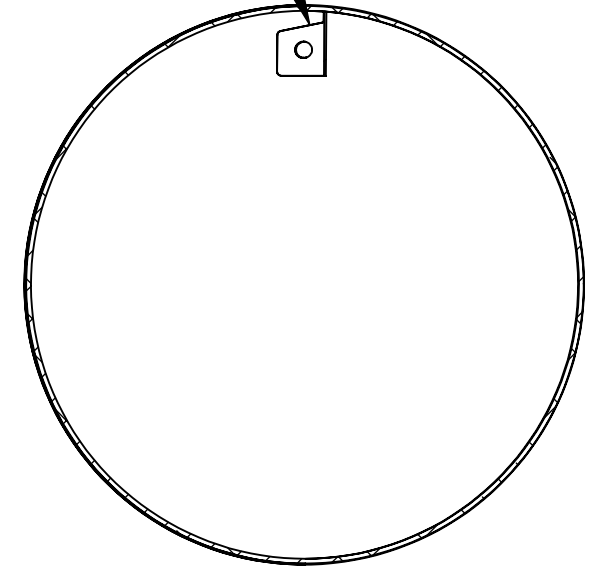
REVISIONS			
REV	DC #	APPROVED BY	APPROVED ON
-	-	-	-
-	-	-	-
A	-	nvidojevic	03/06/2020



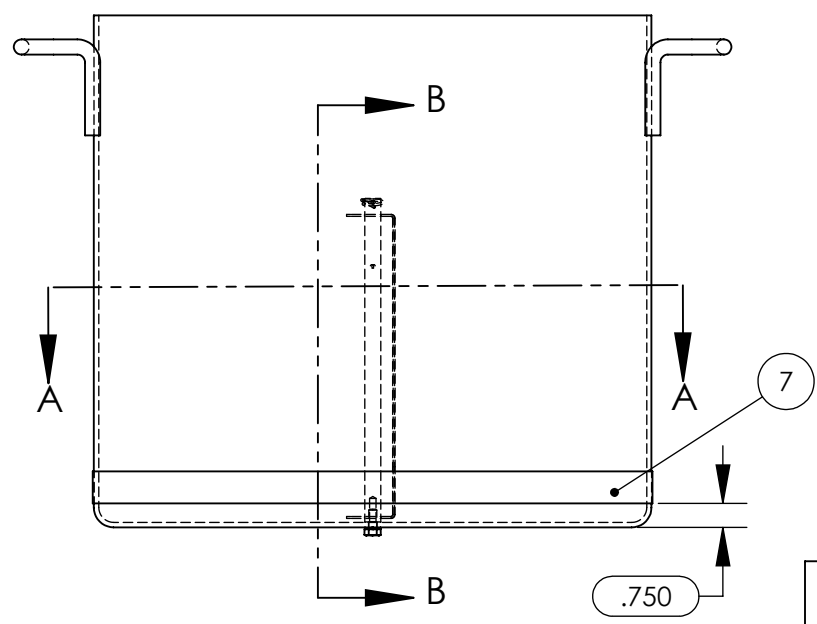
1.370
DRILL HOLE PRIOR TO ASSEMBLY
Ø .266 THRU



ENSURE THAT THE MIXING BLADE CHAMFER AT THE BASE IS TOWARDS THE BOWL INSIDE DIAMETER

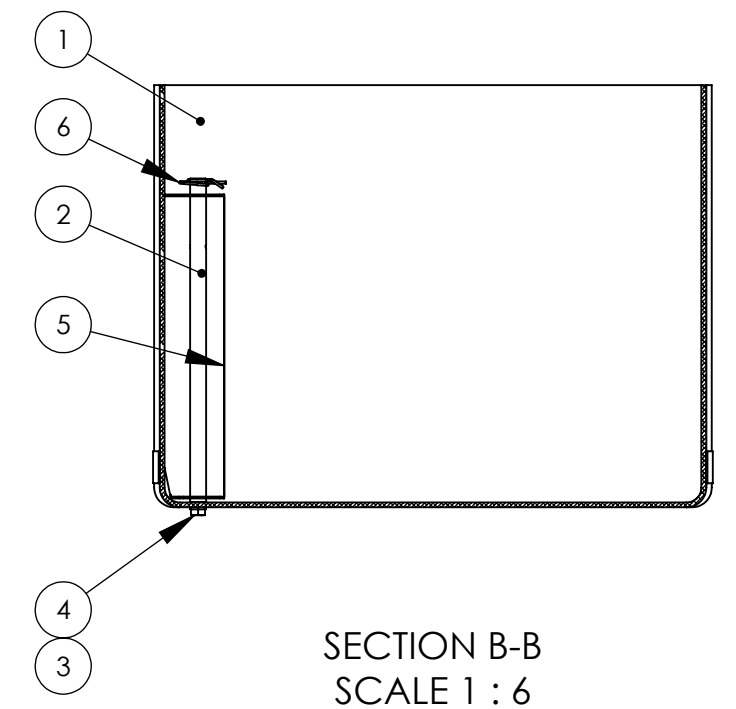


SECTION A-A
SCALE 1 : 6



NOTES:
1. XXX.

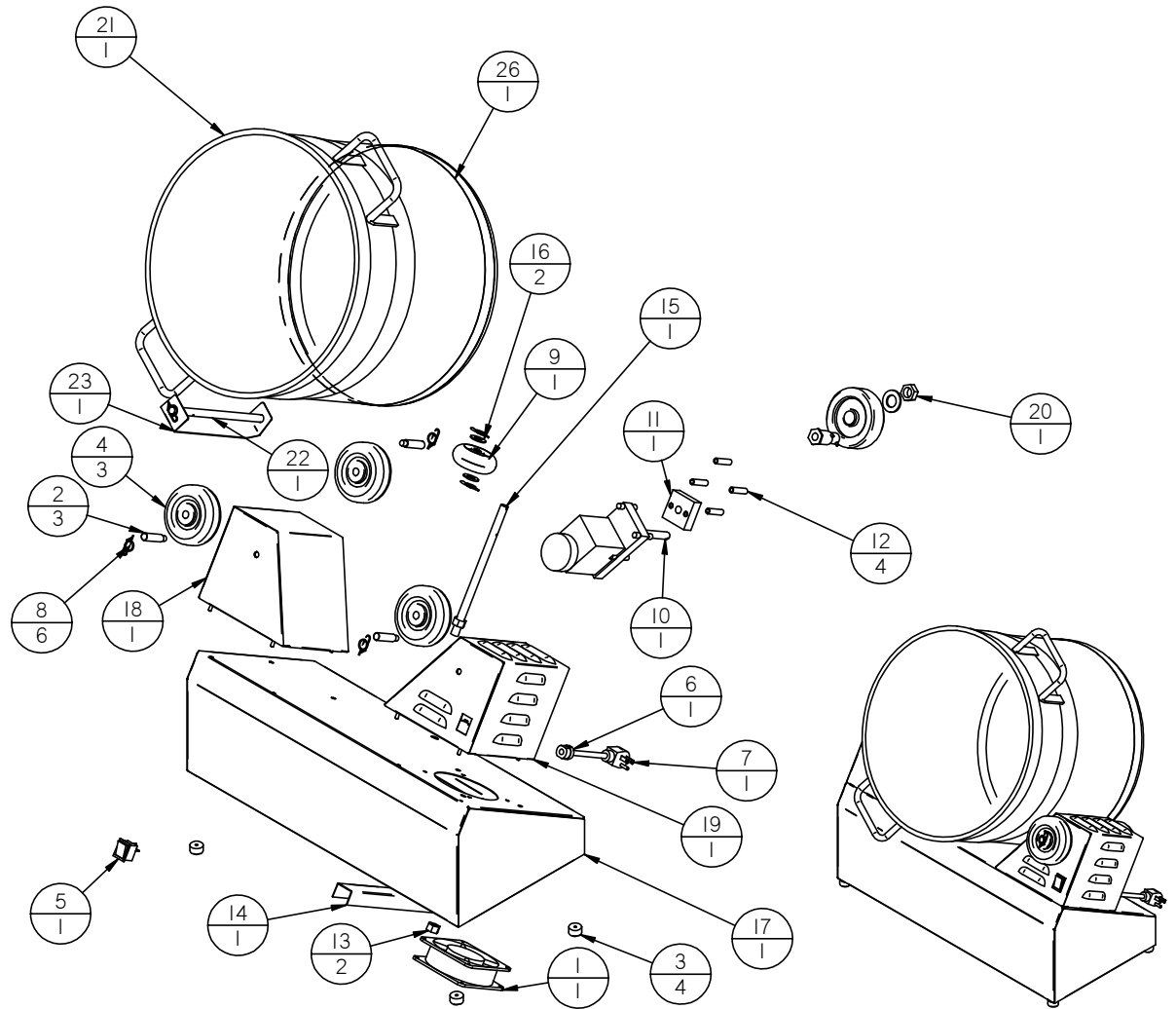
- STANDARD NOTES:**
1. REMOVE SHARP EDGES AND BURRS.
 2. UNLESS SPECIFIED ALL DIMENSIONS ARE IN INCHES.
 3. REFERENCE DIMENSIONS ARE INDICATED IN PARENTHESIS.
 4. CRITICAL DIMENSIONS THAT NEED INSPECTION ARE INDICATED IN OBOUND BOX.
 5. T.S.C. STANDS FOR THEORITICAL SHARP CORNER & INS STANDS FOR INSIDE.
 6. MINOR SCRATCHES ARE ALLOWED ON OPPOSITE SIDE OF MILL FINISH & #4 FINISH.
 7. FOR SHEET METAL, UNLESS SPECIFIED ALL DIMENSIONS ARE OUTSIDE.
 8. FOR SHEET METAL, FLAT PATTERNS ARE FOR REFERENCE ONLY.
 9. FOR SHEET METAL, SEMI-PERF TOOLING TO BE INSTALLED BASED ON MATERIAL THICKNESS. SEMI-PERF BUTTON FALL OFF IS NOT ACCEPTABLE.



SECTION B-B
SCALE 1 : 6

<p>THIRD ANGLE PROJECTION</p>		<p>176 MITTEL DRIVE, WOOD DALE, IL 60191 www.cretors.com www.flo-thru.com</p>	
<p>TOLERANCES</p> <p>x.xx = ± 0.02 x.xxx = ± 0.01 ANGLES = ± 1° HOLES = +0.005 / -0 FINISH = 125Ra</p>		<p>DESCRIPTION</p> <p>BOWL ASSY, 1 MIXING BLADE, 60 QT RETAIL</p>	
<p>B SIZE DRAWING</p>		<p>MATERIAL</p> <p>REFER INDIVIDUAL SUB-PARTS</p>	<p>APPROX. WEIGHT</p> <p>17.3 LBS</p>
<p>DRAWN BY</p> <p>ndarji</p>	<p>DRAWN DATE</p> <p>03/06/2020</p>	<p>DRAWING NUMBER</p> <p>16811</p>	
<p>APPROVED BY</p> <p>nvidojevic</p>	<p>APPROVED DATE</p> <p>03/06/2020</p>	<p>REVISION</p> <p>A</p>	<p>SHEET</p> <p>1 OF 1</p>
<p>THIS DRAWING CONTAINS INFORMATION PROPRIETARY TO C. CRETORS & CO. AND IS FURNISHED IN CONFIDENCE FOR SOLE PURPOSE OF SUPPLYING THE RECIPIENT WITH NEEDED ENGINEERING DATA. THE CONTENTS SHOULD NOT BE DISCLOSED OR REPRODUCED IN ANY MANNER WITHOUT WRITTEN CONSENT OF C. CRETORS & CO. ALL RIGHTS RESERVED.</p>			

Item	Document	Title	Qty
1	I274-2	BLOWER-120V	1
2	I6527	WHEEL SHAFT-THREADED-CMT	3
3	I605-1	RUBBER FOOT-PURCHASED	4
4	I2814	POLY WHEELS 4" - 1/2" BORE	3
5	5130	SWITCH-LIGHTED-230V	1
6	2168	CORD GRIP HEYCO-SR7K-2	1
7	I788	CORD - 10AMP,16-3, NEMA 5-15P	1
8	I2818	CLIP - RETAINING	6
9	I2813	POLY WHEELS-3" -1/2" BORE	1
10	I6698	MTR-1/30 HP-CMT-100 RPM	1
11	I6703	BEARING - CMT5	1
12	I6702	STANDOFF	4
13	I146	1/2-20 LOCKNUT	2
14	I6816	COATER MIXER TUMBLER STIFFENER	1
15	I6775	REAR WHEEL SUPPORT-CHEESE COATER	1
16	I0134	1/2" FLAT WASHER, T304SS, GR5	2
17	I6817	BASE SUPPORT-CHEESE COATER	1
18	I6812	ROLLER SUPPORT ASSY-CHEESE COATER	1
19	I6699	MOTOR SUPPORT-CHEESE COATER	1
20	I2834	WHEEL ASSY-CHEESE COATER	1
21	I6811-1	COATER MIXER BOWL - CMD	1
22	I2816	MIXER BLADE SUPPORT SHAFT	1
23	I2835	MIXING BLADE-MIXER/COATER	1
24*	5743	1/4" MED. SPLT L/W, SS	1
25*	I2628	1/4-20 X 5/8" HHCS - SS	1
26	I2829	NON SLIP TAPE	1

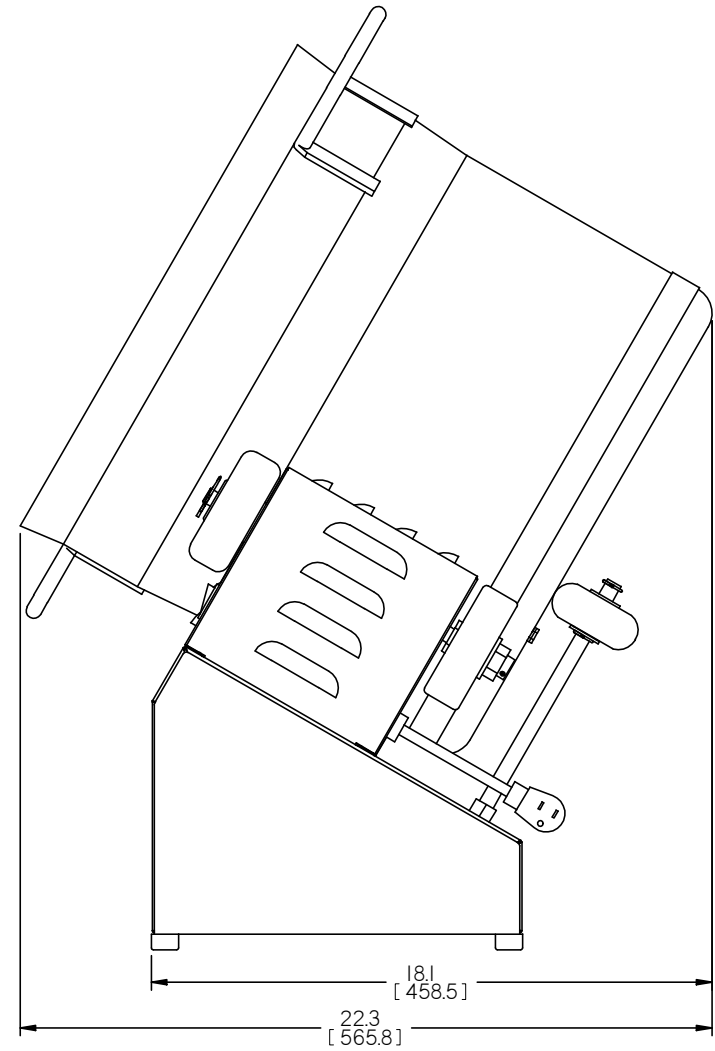
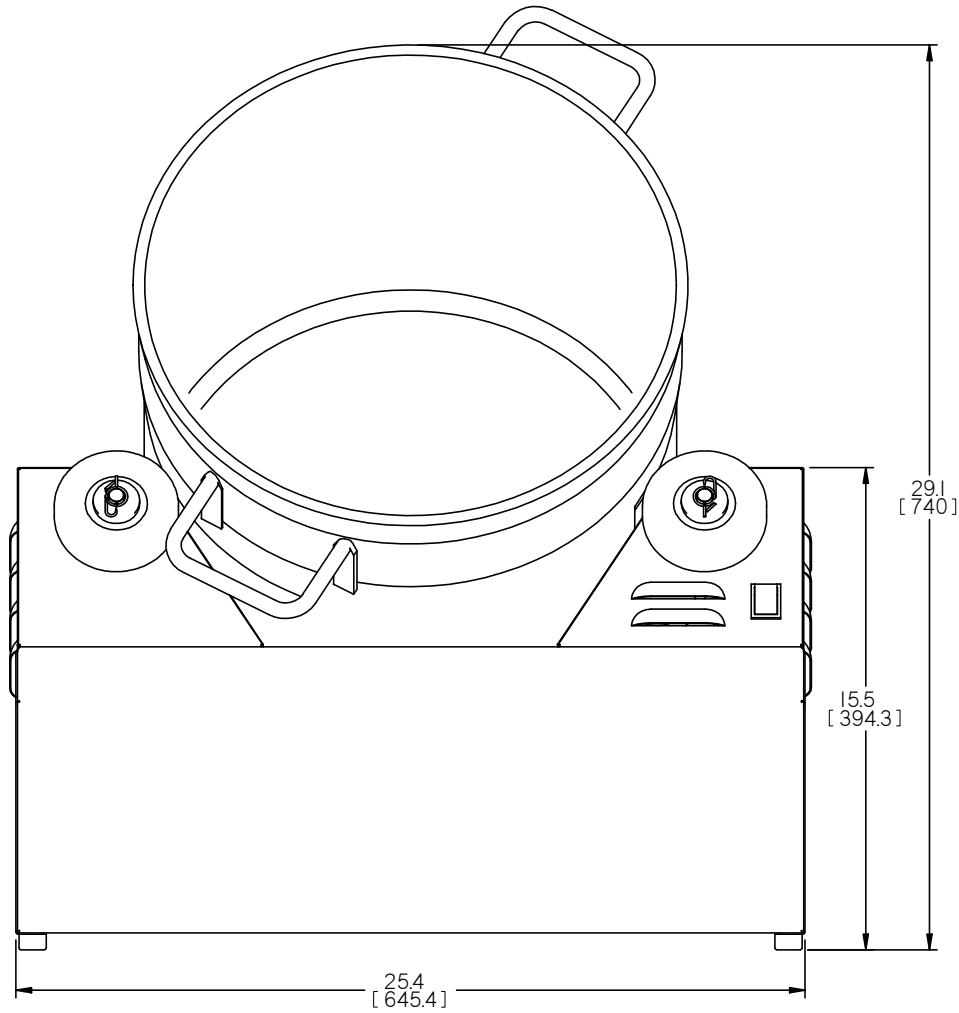


REV.	DESCRIPTION OF REVISION	BY	DATE
A	RELEASED FOR CUSTOMER REVIEW	bud	11/28/12

C. CRETORS & COMPANY
176 MITTEL DRIVE, WOOD DALE, IL 60191
TEL: 847-616-6900 FAX: 847-616-6970

This drawing contains information proprietary to C. Cretors & Co. and is furnished in confidence for the sole purposes of supplying the recipient with needed engineering data. Its contents should not be disclosed or reproduced in any manner without the written consent of C. Cretors & Co. All Rights Reserved.

TOLERANCES X.XX = ±0.020 X.XXX = ±0.005 FRACT. = ±1/64		NAME: COATER/MIXER TUMBLER	
125 SURFACE FINISH ±.5°	ALL HOLES +.005 -.000	DRAWN BY: bud	MATERIAL:
DATE	CHKD:	DATE:	SCALE:
APPROVED	DATE:	REV: A	DWG. No. CMTRA-X

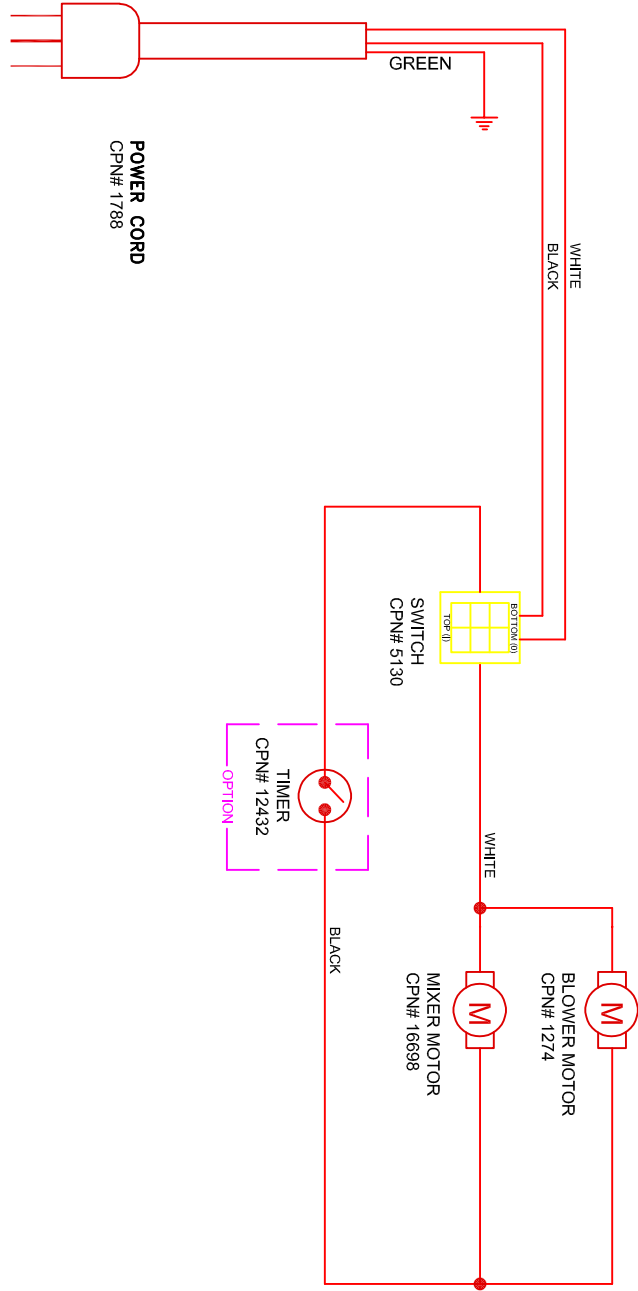


				C. CRETORS & COMPANY 176 MITTEL DRIVE, WOOD DALE, IL 60191 TEL: 847-616-6900 FAX: 847-616-6970		TOLERANCES X.XX = ±0.020 X.XXX = ±0.005 FRACT. = ±1/64 125 SURFACE FINISH ∠ ±5° ALL HOLES +.005 -0.000		NAME: COATER/MIXER TUMBLER	
				This drawing contains information proprietary to C. Cretors & Co. and is furnished in confidence for the sole purposes of supplying the recipient with needed engineering data. Its contents should not be disclosed or reproduced in any manner without the written consent of C. Cretors & Co. All Rights Reserved.		DRAWN BY: bud DATE:		MATERIAL:	
A	RELEASED FOR CUSTOMER REVIEW	bud	11/28/12			CHKD:	DATE:	SCALE:	DWG. No.
REV.	DESCRIPTION OF REVISION	BY	DATE			APPROVED	DATE:	REV: A	CMTRA-X

CRETORS MIXER/COATER RETAIL
 WIRE DIAGRAM - 100/120V 50/60HZ
 BEGINNING SERIAL NO. 1310

DOC: CMTRAR2

10/2013



C.CRETORS AND COMPANY

170 MITTEL DRIVE

WOOD DALE, ILLINOIS 60191

PHONE(847)616-6900, (800)228-1885, FAX (847)616-6970

WEB SITE: <http://www.cretors.com> Email: postmaster@cretors.com

DOC: CMTRAR2